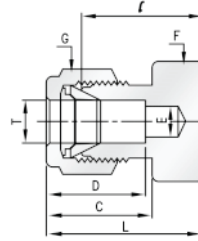


Tube Cap



Dimensions:

Part No.	Tube O. D. T in	Width across flat		D	C	ℓ	L
		F in	G in				
S1-805-02	1/16	5/16	5/16	8.63	10.92	11.20	14.18
S1-805-03	1/8	7/16	7/16	15.24	15.24	13.46	20.06
S1-805-03	3/16	7/16	1/2	13.71	16.00	14.73	21.33
S1-805-04	1/4	1/2	9/16	15.24	17.78	16.00	23.26
S1-805-05	5/16	9/16	5/8	16.25	18.54	17.01	24.38
S1-805-06	3/8	5/8	11/16	16.76	19.30	18.28	25.65
S1-805-08	1/2	13/16	7/8	22.86	21.84	19.05	29.21
S1-805-10	5/8	15/16	1	24.38	21.84	19.81	29.97
S1-805-12	3/4	1-1/16	1-1/8	24.38	21.84	21.33	31.49
S1-805-14	7/8	1-3/16	1-1/4	25.90	21.84	23.87	34.03
S1-805-16	1	1-3/8	1-1/2	31.24	26.41	26.16	38.35