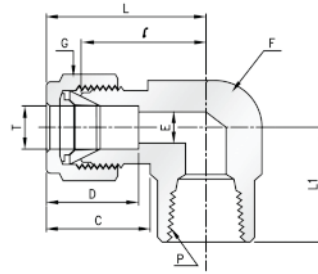


Female Elbow



Dimensions:

Part No.	Tube O. D. T in	P * (NPT)	E Min	Width across flat		D	C	ℓ	L	L ₁
				F in	G in					
S1-102-02-02	1/8	1/8	2.28	1/2	7/16	12.70	15.24	18.03	24.63	19.05
S1-102-02-04	1/8	1/4	2.28	11/16	7/16	12.70	15.24	21.22	27.82	22.35
S1-102-03-02	3/16	1/8	3.04	1/2	1/2	13.71	16.00	18.79	25.40	19.05
S1-102-04-02	1/4	1/8	4.82	1/2	9/16	15.24	17.78	19.56	26.92	19.05
S1-102-04-04	1/4	1/4	4.82	11/16	9/16	15.24	17.78	22.35	29.71	22.35
S1-102-04-06	1/4	3/8	4.82	13/16	9/16	15.24	17.78	24.39	31.75	22.35
S1-102-04-08	1/4	1/2	4.82	1	9/16	15.24	17.78	27.18	34.54	28.44
S1-102-05-02	5/16	1/8	6.35	9/16	5/8	16.25	18.54	21.34	28.70	19.05
S1-102-05-04	5/16	1/4	6.35	11/16	5/8	16.25	18.54	23.12	30.48	22.35
S1-102-06-02	3/8	1/8	7.11	5/8	11/16	16.76	19.30	23.12	30.48	19.05
S1-102-06-04	3/8	1/4	7.11	11/16	11/16	16.76	19.30	23.88	31.24	22.35
S1-102-06-06	3/8	3/8	7.11	13/16	11/16	16.76	19.30	25.91	33.27	22.35
S1-102-06-08	3/8	1/2	7.11	1	11/16	16.76	19.30	28.70	36.06	28.44
S1-102-08-04	1/2	1/4	10.41	13/16	7/8	22.86	21.84	25.90	36.06	22.35
S1-102-08-06	1/2	3/8	10.41	13/16	7/8	22.86	21.84	25.92	36.06	22.35
S1-102-08-08	1/2	1/2	10.41	1	7/8	22.86	21.84	28.70	38.86	28.44
S1-102-10-06	5/8	3/8	12.70	15/16	1	24.38	21.84	27.94	38.10	20.35
S1-102-10-08	5/8	1/2	12.70	1	1	24.38	21.84	29.71	39.87	28.44
S1-102-12-08	3/4	1/2	15.74	1-1/16	1-1/8	24.38	21.84	29.71	39.87	28.44
S1-102-12-12	3/4	3/4	15.74	1-1/4	1-1/8	24.38	21.84	34.54	44.70	31.75
S1-102-14-12	7/8	3/4	18.28	1-1/4	1-1/4	25.90	21.84	34.54	44.70	31.75
S1-102-16-12	1	3/4	22.35	1-27/64	1-1/2	31.24	26.41	36.83	49.02	31.75
S1-102-16-16	1	1	22.35	1-11/16	1-1/2	31.24	26.41	38.10	50.29	38.10

All dimensions are in millimeters unless otherwise specified. Dimensions are for reference only, subject to change.

Another Quality Product By: Unique Valves & Instrumentation.