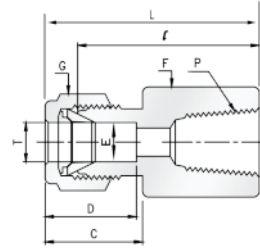
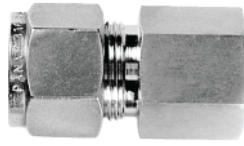


Female Connector



Dimensions:

Part No.	Tube O. D. T in	P (NPT)	E Min	Width across flat		D	C	ℓ	L
				F	G				
				in	in				
S1-301-02-02	1/8	1/8	2.28	9/16	7/16	12.70	15.24	22.10	28.70
S1-301-02-04	1/8	1/4	2.28	3/4	7/16	12.70	15.24	26.92	33.52
S1-301-03-02	3/16	1/8	3.04	9/16	1/2	13.71	16.00	23.10	29.71
S1-301-04-02	1/4	1/8	4.82	9/16	9/16	15.24	17.78	23.88	31.24
S1-301-04-04	1/4	1/4	4.82	3/4	9/16	15.24	17.78	28.45	35.81
S1-301-04-06	1/4	3/8	4.82	7/8	9/16	15.24	17.78	30.23	37.59
S1-301-04-08	1/4	1/2	4.82	1-1/16	9/16	15.24	17.78	35.05	42.41
S1-301-05-02	5/16	1/8	6.35	9/16	5/8	16.25	17.78	24.64	32.00
S1-301-05-04	5/16	1/4	6.35	3/4	5/8	16.25	18.54	29.47	36.83
S1-301-06-02	3/8	1/8	7.11	5/8	11/16	16.76	18.54	25.40	32.76
S1-301-06-04	3/8	1/4	7.11	3/4	11/16	16.76	19.30	30.23	37.59
S1-301-06-06	3/8	3/8	7.11	7/8	11/16	16.76	19.30	31.75	39.11
S1-301-06-08	3/8	1/2	7.11	1-1/16	11/16	16.76	19.30	36.58	43.94
S1-301-06-12	3/8	3/4	7.11	1-5/16	11/16	22.86	19.30	40.39	47.75
S1-301-08-04	1/2	1/4	10.41	1-3/16	7/8	22.86	19.30	30.22	40.38
S1-301-08-06	1/2	3/8	10.41	7/8	7/8	22.86	21.84	31.75	41.91
S1-301-08-08	1/2	1/2	10.41	1-1/16	7/8	22.86	21.84	36.57	46.73
S1-301-08-12	1/2	3/4	10.41	1-5/16	7/8	24.38	21.84	38.10	48.26
S1-301-10-06	5/8	3/8	12.70	15/16	1	24.38	21.84	31.75	41.91
S1-301-10-08	5/8	1/2	12.70	1-1/16	1	24.38	21.84	36.57	46.73
S1-301-12-08	3/4	1/2	15.74	1-1/16	1-1/8	24.38	21.84	36.57	46.73
S1-301-12-12	3/4	3/4	15.74	1-5/16	1-1/8	24.38	21.84	38.10	48.26
S1-301-14-12	7/8	3/4	18.28	1-5/16	1-1/4	25.90	21.84	39.62	49.78
S1-301-16-12	1	3/4	22.35	1-3/8	1-1/2	31.24	26.41	41.05	53.24
S1-301-16-16	1	1	22.35	1-5/8	1-1/2	31.24	26.41	50.04	62.23

All dimensions are in millimeters unless otherwise specified. Dimensions are for reference only, subject to change.

Another Quality Product By: Unique Valves & Instrumentation.