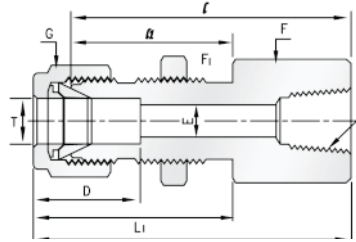


Bulkhead Female Connector



Dimensions:

Part No.	Tube O. D. T in	P * (NPT)	E Min	Width across flat			D	ℓ	ℓ ₁	L	L ₁	Panel Hole Drill Size	Panel Max. Thickness
				F in	F ₁ in	G in							
S1-301B-02-02	1/8	1/8	2.28	9/16	1/2	7/16	12.70	38.10	24.63	44.70	31.24	8.33	12.70
S1-301B-04-02	1/4	1/8	4.82	5/8	5/8	9/16	15.24	39.63	26.16	46.99	33.52	11.50	10.16
S1-301B-04-04	1/4	1/4	4.82	3/4	5/8	9/16	15.24	44.45	26.16	51.81	33.52	11.50	10.16
S1-301B-06-04	3/8	1/4	7.11	3/4	3/4	11/16	16.76	47.75	29.46	55.11	36.83	14.68	11.17
S1-301B-08-06	1/2	3/8	10.41	15/16	15/16	7/8	22.86	51.56	31.75	61.72	41.91	19.44	12.70
S1-301B-08-08	1/2	1/2	10.41	1-1/16	15/16	7/8	22.86	56.38	31.75	66.54	41.91	19.44	12.70
S1-301B-12-12	3/4	3/4	15.74	1-1/4	1-3/16	1-1/8	24.38	65.35	38.80	75.51	47.21	25.79	16.76