

SWAGE NIPPLES & BULL PLUGS



Swage Nipple
Standard / XH



Bull Plug
Standard / XH / TAP



Specification:

- Carbon Steel Swage Nipple and Bull Plugs are manufactured in conformance with ASTM A234WPB and MSS-SP95.
- The material for Swage Nipples and Bull Plugs conform to the requirements of A106 Grade B Seamless pipe and/or hot rolled, low to medium carbon barstock.
- NPT threads on Swage Nipples and Bull Plugs conform to ANSI/ASME B1.20.1, API 5B.
- The electro-galvanized coating on the Swage Nipples and Bull plugs conform to ASTM B633-86 Type III Class III.
- Based on working pressure formulas from which the end user may choose to determine the required schedule of the piping system.
- The chemical and physical properties of the raw material fall within the ranges listed below. Please contact UVI for exact Dimensional/Material information.

MARKING SYMBOL	A234A-00 WBP - PHYSICAL REQUIREMENTS		
	TENSILE	YIELD	HBN
COP	60,000 - 85,000 PSI	35,000 PSI Min	197 Max

A234A-00 WBP - CHEMICAL COMPOSITION REQUIREMENTS										
C	MN	P	S	SI	CR	MO	NI	CU	V	CB
.03 Max	.29 - 1.06	.05 Max	.058 Max	.10 Max	.40 Max	.15 Max	.40 Max	.40 Max	.08 Max	.02 Max

Swage Nipple

- Standard**
- 1/2"
 - 3/4"
 - 1"
 - 1 1/4"
 - 1 1/2"
 - 2"
 - 2 1/2"
 - 3"
 - 4"
 - 5"
 - 6"
 - 8"
- X Heavy**
- 1"
 - 2"
 - 3"
 - 4"
 - 5"
 - 6"
 - 8"

Bull Plug

- 1/8"
- 1/4"
- 3/8"
- 1/2"
- 3/4"
- 1"
- 1 1/4"
- 1 1/2"
- 2"
- 2" x 1/4" TAP
- 2 x 1/2" TAP
- 2 1/2"
- 3"
- 4"
- 5"
- 6"
- 8"

ENGINEER APPROVAL

JOB: _____ DATE: ___/___/___

MEETS DIMENSIONAL SPECIFICATIONS: YES NO

MEETS MATERIAL SPECIFICATIONS: YES NO

MEETS PRESSURE / TEMPERATURE SPECIFICATIONS: YES NO

NOTES: _____

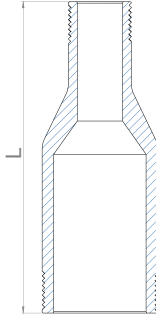
ENGINEER NAME: _____

ENGINEER SIGNATURE: _____

* Due to the continuous development of our products, design or construction may change without prior notice.

SWAGE NIPPLES & BULL PLUGS

Standard Swage Nipple



Weights (LBS) • Dimensions (IN) • QTY (Case Quantity)

1/2"	ITEM CODE	SIZE	L	QTY	WEIGHT	LIST PRICE
	SN.50X.25STD	1/2 x 1/4	2 3/4	100	0.18	

Weights (LBS) • Dimensions (IN) • QTY (Case Quantity)

3/4"	ITEM CODE	SIZE	L	QTY	WEIGHT	LIST PRICE
	SN.75X.25STD	3/4 x 1/4	3	80	0.24	

Weights (LBS) • Dimensions (IN) • QTY (Case Quantity)

1"	ITEM CODE	SIZE	L	QTY	WEIGHT	LIST PRICE
	SN1X.125STD	1 x 1/8	3 1/2	50	0.44	
	SN1X.25STD	1 x 1/4	3 1/2	50	0.44	
	SN1X.50STD	1 x 1/2	3 1/2	50	0.44	
	SN1X.75STD	1 x 3/4	3 1/2	50	0.42	

Weights (LBS) • Dimensions (IN) • QTY (Case Quantity)

1 1/4"	ITEM CODE	SIZE	L	QTY	WEIGHT	LIST PRICE
	SN1.25X.50STD	1 1/4 x 1/2	4	24	0.73	
	SN1.25X1STD	1 1/4 x 1	4	24	0.73	

Weights (LBS) • Dimensions (IN) • QTY (Case Quantity)

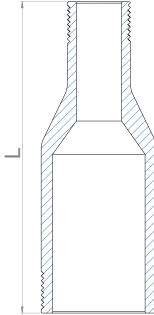
1 1/2"	ITEM CODE	SIZE	L	QTY	WEIGHT	LIST PRICE
	SN1.5X.50STD	1 1/2 x 1/2	4 1/2	20	1.04	
	SN1.5X1STD	1 1/2 x 1	4 1/2	20	1.04	
	SN1.5X1.25STD	1 1/2 x 1 1/4	4 1/2	20	0.99	

Weights (LBS) • Dimensions (IN) • QTY (Case Quantity)

2"	ITEM CODE	SIZE	L	QTY	WEIGHT	LIST PRICE
	SN2X.50STD	2 x 1/2	6 1/2	10	2.34	
	SN2X.75STD	2 x 3/4	6 1/2	10	2.16	
	SN2X1STD	2 x 1	6 1/2	10	2.38	
	SN2X1.25STD	2 x 1 1/4	6 1/2	10	2.65	
	SN2X1.50STD	2 x 1 1/2	6 1/2	10	3.31	

SWAGE NIPPLES & BULL PLUGS

Standard Swage Nipple



Weights (LBS) • Dimensions (IN) • QTY (Case Quantity)

2½"	ITEM CODE	SIZE	L	QTY	WEIGHT	LIST PRICE
	SN2.5X.50STD	2 ½ x ½	7	484	4.25	
	SN2.5X1STD	2 ½ x 1	7	484	4.19	
	SN2.5X1.50STD	2 ½ x 1 ½	7	484	4.10	
	SN2.5X2STD	2 ½ x 2	7	484	4.10	

Weights (LBS) • Dimensions (IN) • QTY (Case Quantity)

3"	ITEM CODE	SIZE	L	QTY	WEIGHT	LIST PRICE
	SN3X.50STD	3 x ½	8	400	6.26	
	SN3X1STD	3 x 1	8	400	4.63	
	SN3X2STD	3 x 2	8	400	4.48	
	SN3X2.5STD	3 x 2 ½	8	400	4.85	

Weights (LBS) • Dimensions (IN) • QTY (Case Quantity)

4"	ITEM CODE	SIZE	L	QTY	WEIGHT	LIST PRICE
	SN4X1STD	4 x 1	9	256	7.94	
	SN4X1.50STD	4 x 1 ½	9	256	7.94	
	SN4X2STD	4 x 2	9	256	8.38	
	SN4X2.5STD	4 x 2 ½	9	256	8.16	
	SN4X3STD	4 x 3	9	256	7.21	

Weights (LBS) • Dimensions (IN) • QTY (Case Quantity)

5"	ITEM CODE	SIZE	L	QTY	WEIGHT	LIST PRICE
	SN5X3STD	5 x 3	11	126	15.59	
	SN5X4STD	5 x 4	11	126	17.20	

Weights (LBS) • Dimensions (IN) • QTY (Case Quantity)

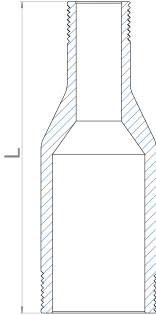
6"	ITEM CODE	SIZE	L	QTY	WEIGHT	LIST PRICE
	SN6X2STD	6 x 2	12	75	28.42	
	SN6X3STD	6 x 3	12	75	27.56	
	SN6X4STD	6 x 4	12	75	25.46	

Weights (LBS) • Dimensions (IN) • QTY (Case Quantity)

8"	ITEM CODE	SIZE	L	QTY	WEIGHT	LIST PRICE
	SN8X3STD	8 x 3	13	32	41.71	
	SN8X4STD	8 x 4	13	32	40.48	
	SN8X5STD	8 x 5	13	32	40.34	
	SN8X6STD	8 x 6	13	32	39.64	

SWAGE NIPPLES & BULL PLUGS

X Heavy Swage Nipple



Weights (LBS) • Dimensions (IN) • QTY (Case Quantity)

1"	ITEM CODE	SIZE	L	QTY	WEIGHT	LIST PRICE
	SN1X.25XH	1 x ¼	3 ½	50	0.44	
	SN1X.50XH	1 x ½	3 ½	50	0.44	

Weights (LBS) • Dimensions (IN) • QTY (Case Quantity)

2"	ITEM CODE	SIZE	L	QTY	WEIGHT	LIST PRICE
	SN2X.75XH	2 x ¾	6 ½	10	2.23	
	SN2X1XH	2 x 1	6 ½	10	1.94	
	SN2X1.25XH	2 x 1 ¼	6 ½	10	2.76	
	SN2X1.50XH	2 x 1 ½	6 ½	10	3.42	

Weights (LBS) • Dimensions (IN) • QTY (Case Quantity)

3"	ITEM CODE	SIZE	L	QTY	WEIGHT	LIST PRICE
	SN3X1XH	3 x 1	8	400	4.63	
	SN3X2XH	3 x 2	8	400	4.85	

Weights (LBS) • Dimensions (IN) • QTY (Case Quantity)

4"	ITEM CODE	SIZE	L	QTY	WEIGHT	LIST PRICE
	SN4X1XH	4 x 1	9	256	7.94	
	SN4X2XH	4 x 2	9	256	8.77	
	SN4X3XH	4 x 3	9	256	7.72	

Weights (LBS) • Dimensions (IN) • QTY (Case Quantity)

5"	ITEM CODE	SIZE	L	QTY	WEIGHT	LIST PRICE
	SN5X3XH	5 x 3	11	126	16.75	
	SN5X4XH	5 x 4	11	126	17.42	

Weights (LBS) • Dimensions (IN) • QTY (Case Quantity)

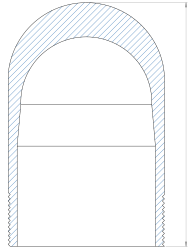
6"	ITEM CODE	SIZE	L	QTY	WEIGHT	LIST PRICE
	SN6X2XH	6 x 2	12	75	28.42	
	SN6X3XH	6 x 3	12	75	27.56	
	SN6X4XH	6 x 4	12	75	25.46	

Weights (LBS) • Dimensions (IN) • QTY (Case Quantity)

8"	ITEM CODE	SIZE	L	QTY	WEIGHT	LIST PRICE
	SN8X3XH	8 x 3	13	32	41.71	
	SN8X4XH	8 x 4	13	32	40.48	
	SN8X5XH	8 x 5	13	32	40.34	
	SN8X6XH	8 x 6	13	32	39.64	

SWAGE NIPPLES & BULL PLUGS

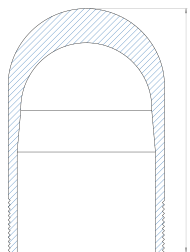
Standard Bull Plug



Weights (LBS) • Dimensions (IN) • QTY (Case Quantity)

ITEM CODE	SIZE	L	QTY	WEIGHT	LIST PRICE
BP.125STD	1/8	2	400	0.10	
BP.25STD	1/4	2	400	0.11	
BP.375STD	3/8	2 1/4	200	0.14	
BP.50STD	1/2	2 1/2	200	0.33	
BP.75STD	3/4	2 3/4	100	0.50	
BP1STD	1	3	50	0.66	
BP1.25STD	1 1/4	3 1/4	30	1.00	
BP1.5STD	1 1/2	3 1/2	20	1.20	
BP2STD	2	4	12	2.30	
BP2.5STD	2 1/2	5	432	3.00	
BP3STD	3	6	324	4.50	
BP4STD	4	7	196	7.50	

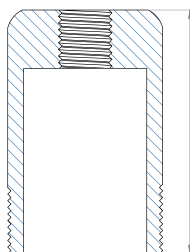
X Heavy Bull Plug



Weights (LBS) • Dimensions (IN) • QTY (Case Quantity)

ITEM CODE	SIZE	L	QTY	WEIGHT	LIST PRICE
BP.125XH	1/8	2	400	0.10	
BP.25XH	1/4	2	400	0.11	
BP.375XH	3/8	2 1/4	200	0.14	
BP.50XH	1/2	2 1/2	200	0.33	
BP.75XH	3/4	2 3/4	100	0.50	
BP1XH	1	3	50	0.66	
BP1.25XH	1 1/4	3 1/4	30	1.00	
BP1.5XH	1 1/2	3 1/2	20	1.20	
BP2XH	2	4	12	2.50	
BP2.5XH	2 1/2	5	432	3.50	
BP3XH	3	6	324	6.00	
BP4XH	4	7	196	10.00	
BP5XH	5	8 1/2	84	17.00	
BP6XH	6	10	50	25.00	
BP8XH	8	11	32	44.00	

X Heavy Bull Plug W/ TAP



Weights (LBS) • Dimensions (IN) • QTY (Case Quantity)

ITEM CODE	SIZE	L	QTY	WEIGHT	LIST PRICE
BP2XH.25T	2 x 1/4 TAP	4	12	2.16	
BP2XH.50T	2 x 1/2 TAP	4	12	2.16	