

CARBON STEEL FLANGES

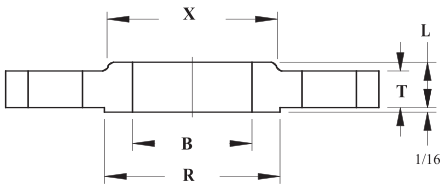
CLASS 150



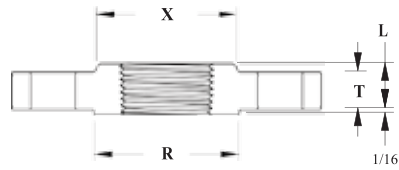
CARBON STEEL FORGED FLANGES

• ANSI B16.5 Class 150 CS Forged Flanges

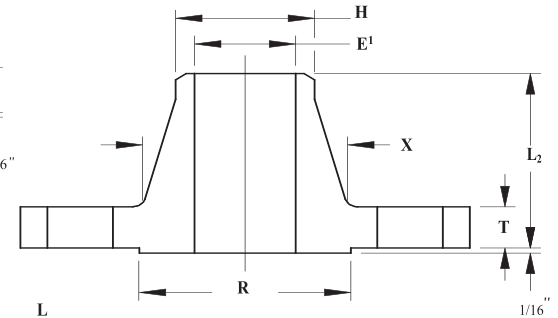
SLIP ON



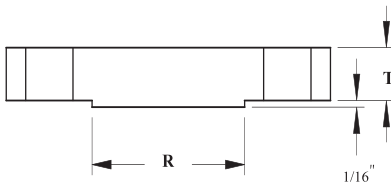
THREADED



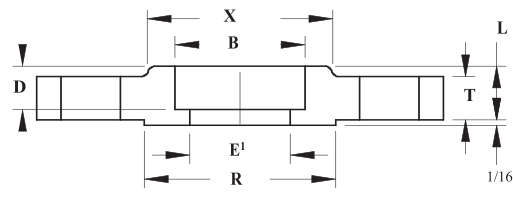
WELD NECK



BLIND



SOCKET WELD



Dimension:

CLASS 150 Dimensions (IN)

NPS	O	T	R	X	#/Dia of Holes	Bolt Circle Dia	B	E1	H	L	L2	D	Thread Length
1/2	3.5	0.38	1.38	1.19	4-0.62	2.38	0.88	0.62	0.84	0.56	1.81	0.38	0.62
3/4	3.88	0.44	1.69	1.5	4-0.62	2.75	1.09	0.82	1.05	0.56	2	0.44	0.6
1	4.25	0.5	2	1.94	4-0.62	3.12	1.36	1.05	1.32	0.62	2.12	0.5	0.69
1 1/4	4.62	0.56	2.5	2.31	4-0.62	3.5	1.7	1.38	1.66	0.75	2.19	0.56	0.81
1 1/2	5	0.62	2.88	2.56	4-0.62	3.88	1.95	1.61	1.9	0.81	2.38	0.62	0.88
2	6	0.69	3.62	3.06	4-0.75	4.75	2.44	2.07	2.38	0.94	2.44	0.69	1
2 1/2	7	0.81	4.12	3.56	4-0.75	5.5	2.94	2.47	2.88	1.06	2.69	0.75	1.12
3	7.5	0.88	5	4.25	4-0.75	6	3.57	3.07	3.5	1.12	2.69	0.81	1.19
3 1/2	8.5	0.88	5.5	4.81	8-0.75	7	4.07	3.55	4	1.19	2.75	0.88	1.25
4	9	0.88	6.19	5.31	8-0.75	7.5	4.57	4.03	4.5	1.25	2.94	0.94	1.31
5	10	0.88	7.31	6.44	8-0.88	8.5	5.66	5.05	5.56	1.38	3.44	0.94	1.44
6	11	0.94	8.5	7.56	8-0.88	9.5	6.72	6.07	6.63	1.5	3.44	1.06	1.56
8	13.5	1.06	10.62	9.69	8-0.88	11.75	8.72	7.98	8.63	1.69	3.94	1.25	1.75
10	16	1.12	12.75	12	12-1.00	14.25	10.88	10.02	10.75	1.88	3.94	1.31	1.94
12	19	1.19	15	14.38	12-1.00	17	12.88	12	12.75	2.12	4.44	1.56	2.19
14	21	1.31	16.25	15.75	12-1.12	18.75	14.14	13.25	14	2.19	4.94	1.63	2.25
16	23.5	1.38	18.5	18	16-1.12	21.25	16.16	15.25	16	2.44	4.94	1.75	2.5
18	25	1.5	21	19.88	16-1.25	22.75	18.18	17.25	18	2.62	5.44	1.94	2.69
20	27.5	1.62	23	22	20-1.25	25	20.2	19.25	20	2.81	5.62	2.13	2.88
22	29.5	1.75	25.25	24.25	20-1.38	27.25	22.22	21.25	22	3.07	5.82	2.38	3.13
24	32	1.81	27.25	26.12	20-1.38	29.5	24.25	23.25	24	3.19	5.94	2.5	3.25

CARBON STEEL FLANGES

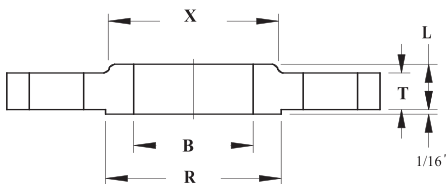
CLASS 300



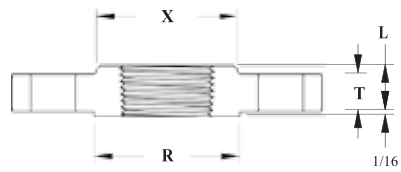
CARBON STEEL FORGED FLANGES

• ANSI B16.5 Class 300 CS Forged Flanges

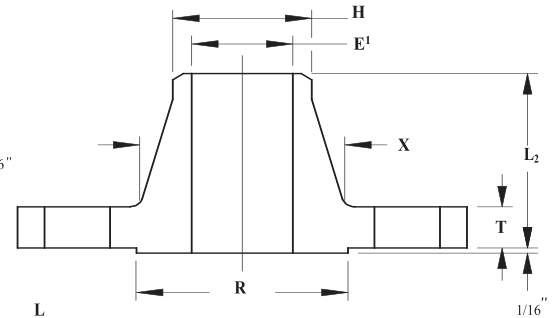
SLIP ON



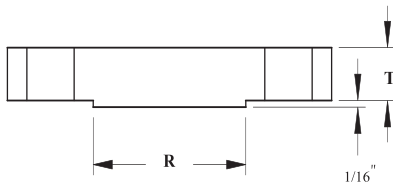
THREADED



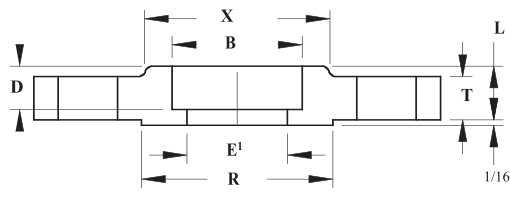
WELD NECK



BLIND



SOCKET WELD



Dimension:

CLASS 300 Dimensions (IN)

NPS	O	T	R	X	#/Dia of Holes	Bolt Circle Dia	B	E1	H	L	L2	D	Thread Length
1/2	3.75	0.5	1.38	1.5	4-0.63	2.62	0.88	0.62	0.84	0.81	2	0.38	0.62
3/4	4.62	0.56	1.69	1.88	4-0.75	3.25	1.09	0.82	1.05	0.94	2.19	0.44	0.62
1	4.88	0.62	2	2.12	4-0.75	3.5	1.36	1.05	1.32	1	2.38	0.5	0.69
1 1/4	5.25	0.69	2.5	2.5	4-0.75	3.88	1.7	1.38	1.66	1	2.5	0.56	0.81
1 1/2	6.12	0.75	2.88	2.75	4-0.88	4.5	1.95	1.61	1.9	1.13	2.63	0.62	0.88
2	6.5	0.81	3.62	3.31	8-0.75	5	2.44	2.07	2.38	1.25	2.69	0.69	1.12
2 1/2	7.5	0.94	4.12	3.94	8-0.88	5.88	2.94	2.47	2.88	1.44	2.94	0.75	1.25
3	8.25	1.06	5	4.62	8-0.88	6.62	3.57	3.07	3.5	1.63	3.06	0.81	1.25
3 1/2	9	1.12	5.5	5.25	8-0.88	7.25	4.07	3.55	4	1.69	3.13	1.44
4	10	1.19	6.19	5.75	8-0.88	7.88	4.57	4.03	4.5	1.82	3.32	1.44
5	11	1.31	7.31	7	8-0.88	9.25	5.66	5.05	5.56	1.94	3.82	1.69
6	12.5	1.38	8.5	8.12	12-0.88	10.62	6.72	6.07	6.63	2	3.82	1.81
8	15	1.56	10.62	10.25	12-1.00	13	8.72	7.98	8.63	2.38	4.32	2
10	17.5	1.81	12.75	12.62	16-1.12	15.25	10.88	10.02	10.75	2.56	4.56	2.19
12	20.5	1.94	15	14.75	16-1.25	17.75	12.88	12	12.75	2.82	5.06	2.38
14	23	2.06	16.25	16.75	20-1.25	20.25	14.14	13.25	14	2.94	5.56	2.5
16	25.5	2.19	18.5	19	20-1.38	22.5	16.16	15.25	16	3.19	5.69	2.69
18	28	2.31	21	21	24-1.38	24.75	18.18	17.25	18	3.44	6.19	2.75
20	30.5	2.44	23	23.12	24-1.38	27	20.2	19.25	20	3.69	6.32	2.88
22	33	2.57	25.25	25.25	24-1.63	29.25	22.22	21.25	22	3.93	6.43	3.13
24	36	2.69	27.25	27.62	24-1.63	32	24.25	23.25	24	4.13	6.56	3.25

CARBON STEEL FLANGES

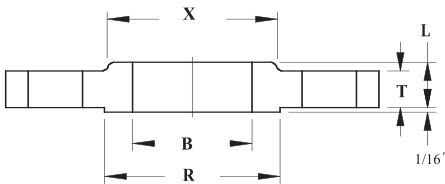
CLASS 600



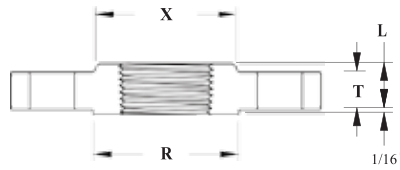
CARBON STEEL FORGED FLANGES

• ANSI B16.5 Class 600 CS Forged Flanges

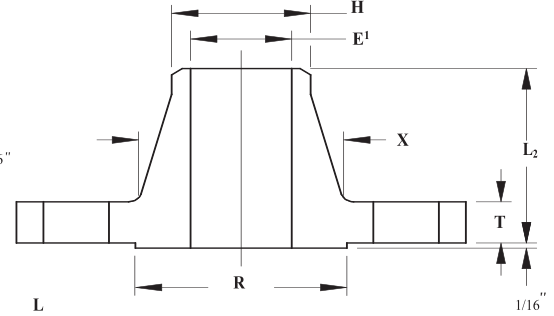
SLIP ON



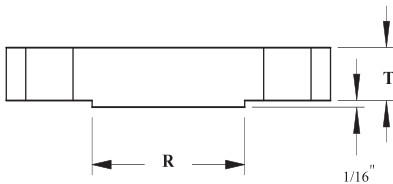
THREADED



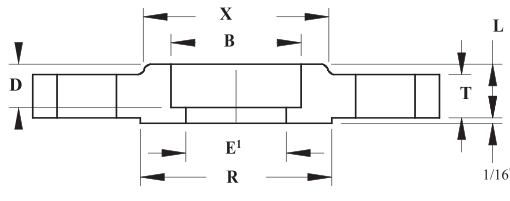
WELD NECK



BLIND



SOCKET WELD



Dimension:

CLASS 600 Dimensions (IN)

NPS	O	T	R	X	#/Dia of Holes	Bolt Circle Dia	B	H	L	L2	D	Thread Length
1/2	3.75	0.56	1.38	1.5	4-0.63	2.62	0.88	0.84	0.88	2.06	0.38	0.62
3/4	4.62	0.62	1.69	1.88	4-0.75	3.25	1.09	1.05	1	2.25	0.44	0.62
1	4.88	0.69	2	2.12	4-0.75	3.5	1.36	1.32	1.06	2.44	0.5	0.69
1¼	5.25	0.81	2.5	2.5	4-0.75	3.88	1.7	1.66	1.12	2.62	0.56	0.81
1½	6.12	0.88	2.88	2.75	4-0.88	4.5	1.95	1.9	1.25	2.75	0.62	0.88
2	6.5	1	3.62	3.31	8-0.75	5	2.44	2.38	1.44	2.88	0.69	1.12
2½	7.5	1.12	4.12	3.94	8-0.88	5.88	2.94	2.88	1.62	3.12	0.75	1.25
3	8.25	1.25	5	4.62	8-0.88	6.62	3.57	3.5	1.81	3.25	0.81	1.38
3½	9	1.38	5.5	5.25	8-1.00	7.25	4.07	4	1.94	3.38	1.56
4	10.75	1.5	6.19	6	8-1.00	8.5	4.57	4.5	2.12	4	1.62
5	13	1.75	7.31	7.44	8-1.12	10.5	5.66	5.56	2.38	4.5	1.88
6	14	1.88	8.5	8.75	12-1.12	11.5	6.72	6.63	2.62	4.62	2
8	16.5	2.19	10.62	10.75	12-1.25	13.75	8.72	8.63	3	5.25	2.25
10	20	2.5	12.75	13.5	16-1.38	17	10.88	10.75	3.38	6	2.56
12	22	2.62	15	15.75	20-1.38	19.25	12.88	12.75	3.62	6.12	2.75
14	23.75	2.75	16.25	17	20-1.50	20.75	14.14	14	3.69	6.5	2.88
16	27	3	18.5	19.5	20-1.63	23.75	16.16	16	4.19	7	3.06
18	29.25	3.25	21	21.5	20-1.75	25.75	18.18	18	4.62	7.25	3.12
20	32	3.5	23	24	24-1.75	28.5	20.2	20	5	7.5	3.25
22	34.25	3.75	25.25	26.25	24-1.75	30.63	22.22	22	5.25	7.75	--
24	37	4	27.25	28.25	24-2.00	33	24.25	24	5.5	8	3.62